



Site Visit to Sishen Mine

14 April 2010

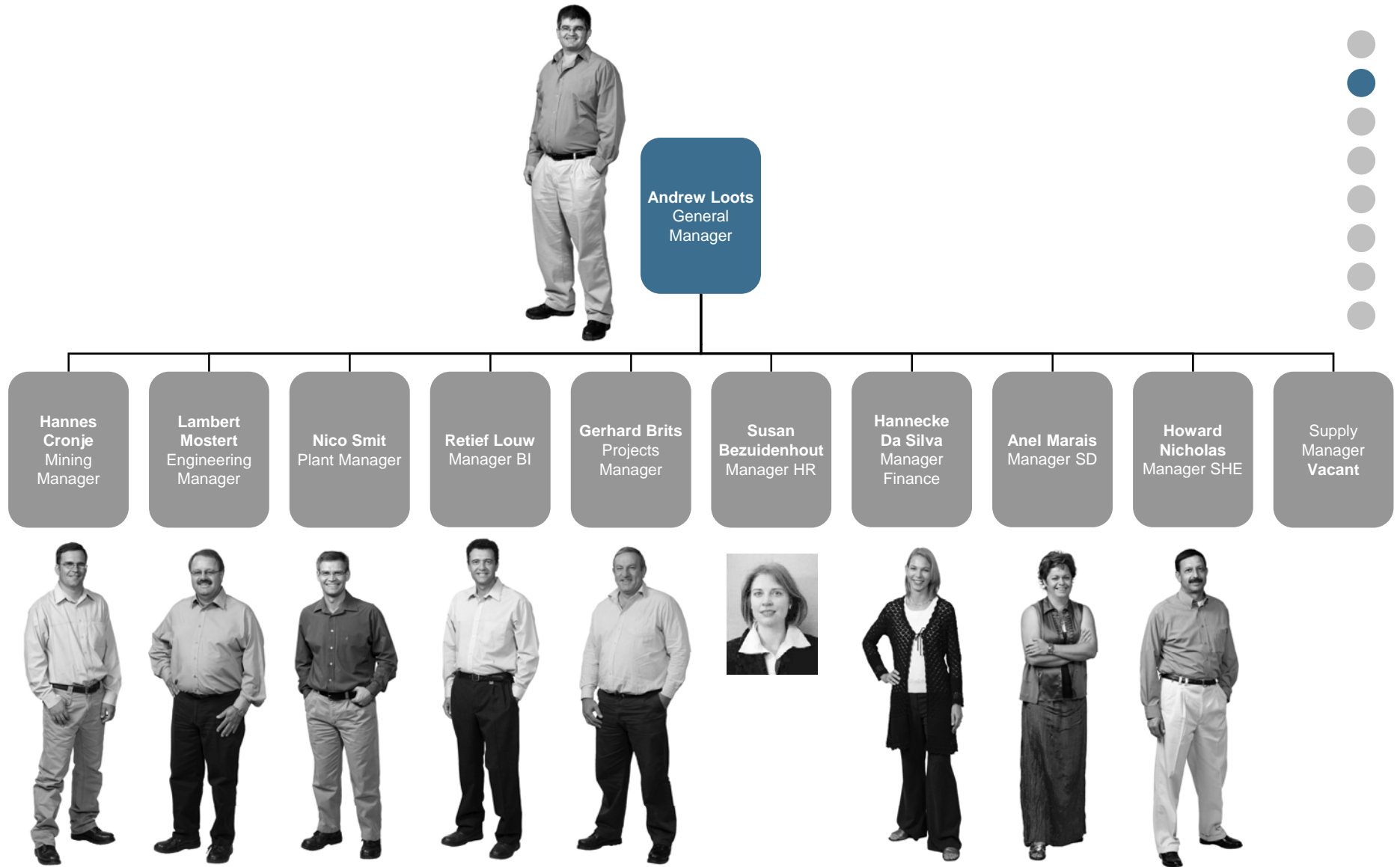


A member of the Anglo American plc group

Summary: Kumba Iron Ore

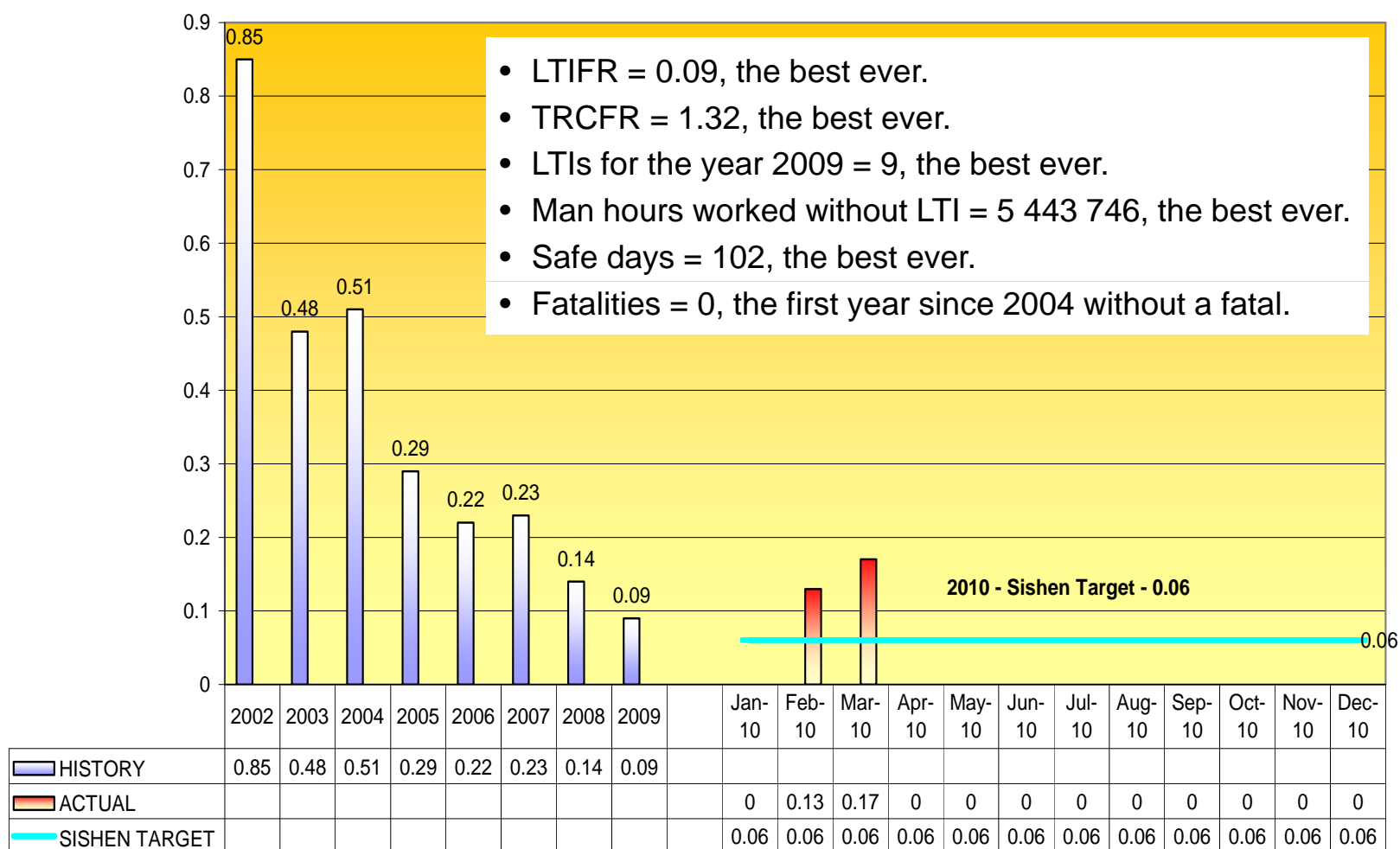
- Large hematite ore body: $\pm 14\text{km} \times 3.2\text{km} \times 400\text{m}$: 2.4bt resource → 1.6bt reserve
- Hard ore: 60:40 lump to fine ratio
- Mining started in 1953; First ore exported in 1976
- Highly mechanized, continuous blending mining operation
- Entire Run-of-Mine (ROM) beneficiated
 - Dense medium separation (DMS) - drums and cyclones
 - JIG gravity separation – Coarse, medium and fine jigs
- Products
 - 25mm 66% Fe lump
 - 25mm 64% Fe lump
 - 27 and 20mm 66% Fe lump – niche products
 - 8mm 65% Fe course sinter – niche product
 - 6.3mm 64% Fe fines
- Consistent product quality is ensured through final product blending and reclaiming at Sishen before dispatch to customers
- Export ore is transported via the Sishen-Saldanha Iron Ore Export Channel (IOEC) to Saldanha port

Sishen Mine Management Team

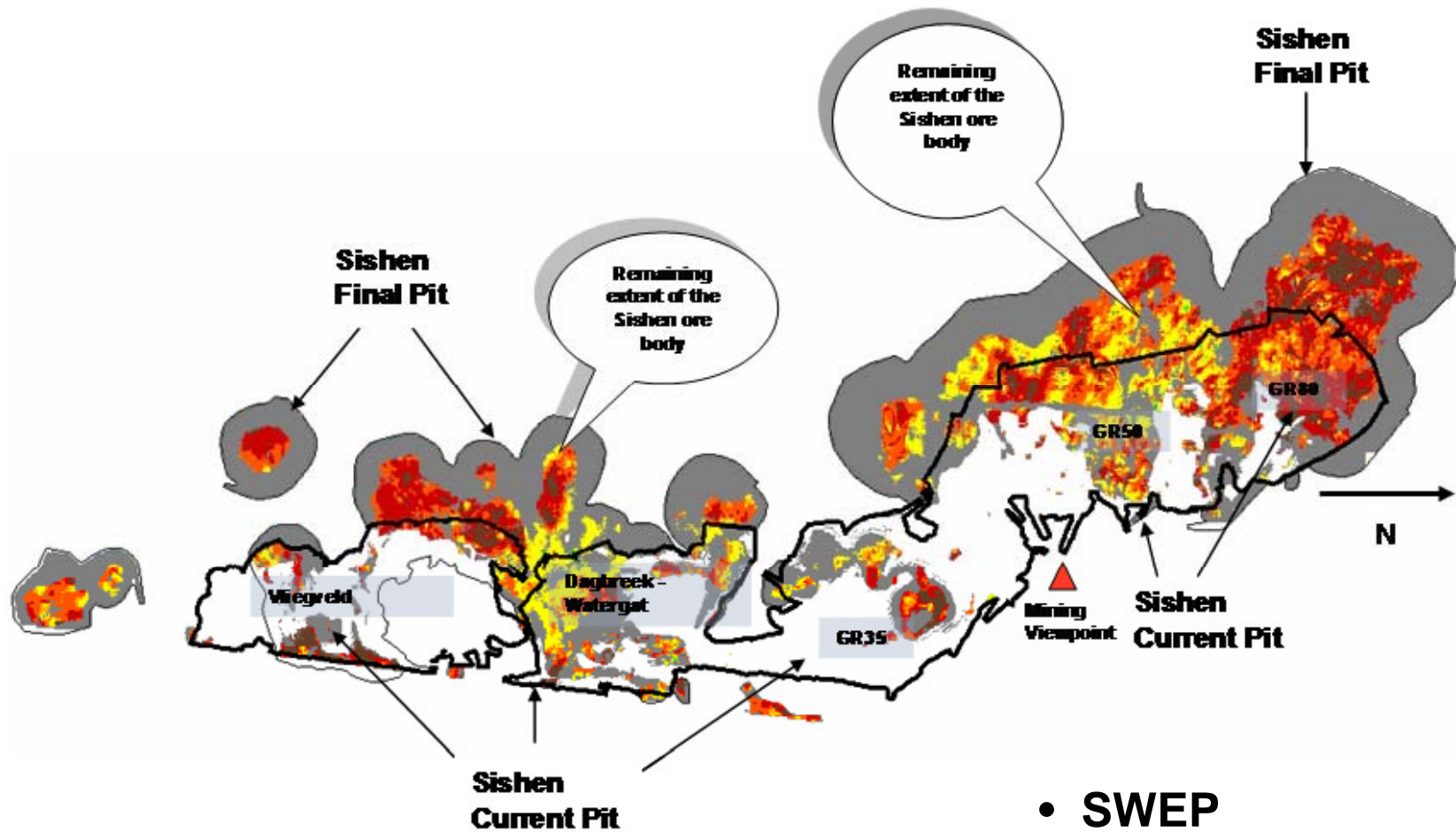


Safety: LTIFR Sishen and Safety Achievements 2009

LTIFR – Sishen Mine – 2010 – YTD



View of ore body



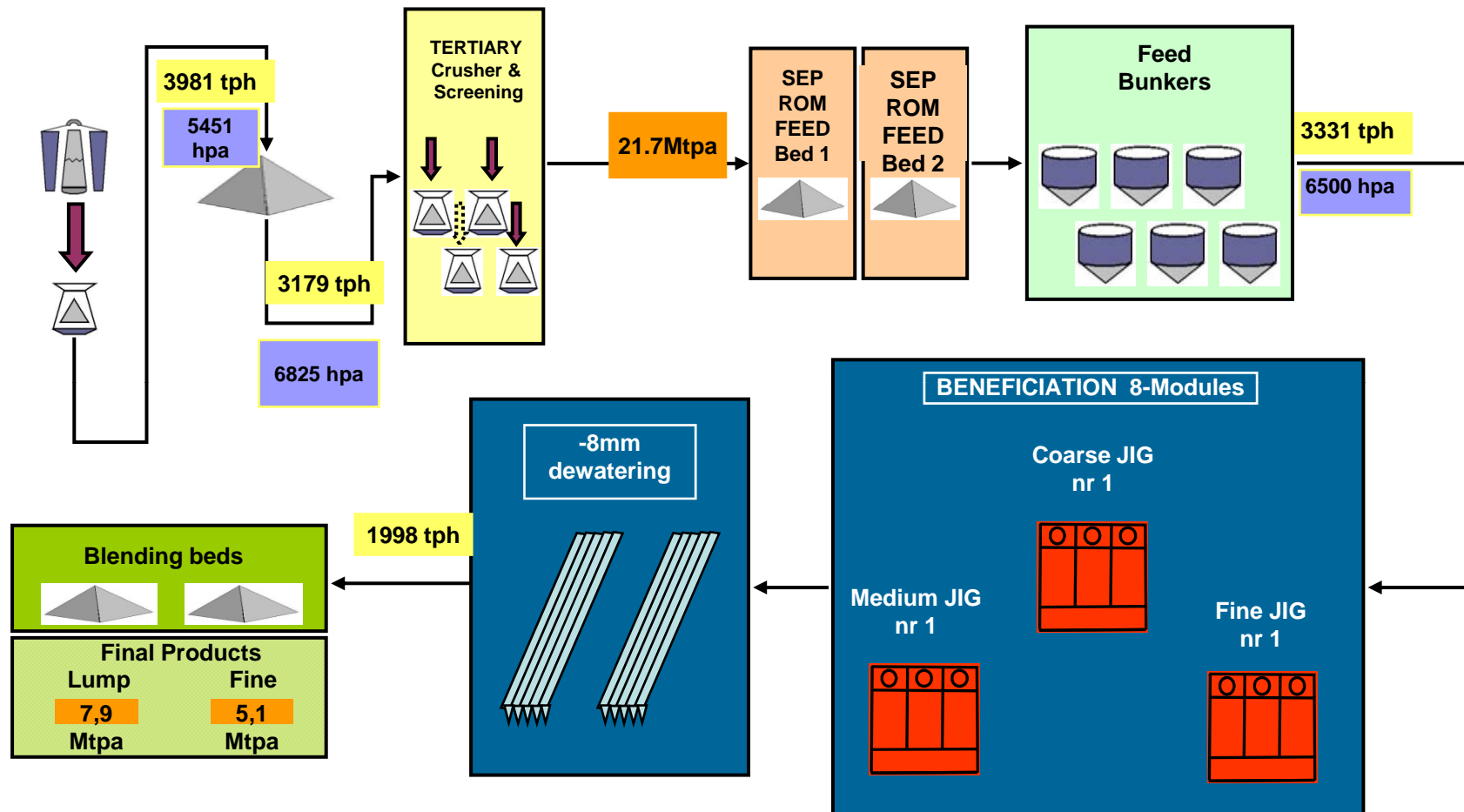
- SWEP
- Waste ramp up

Summary of Production trends

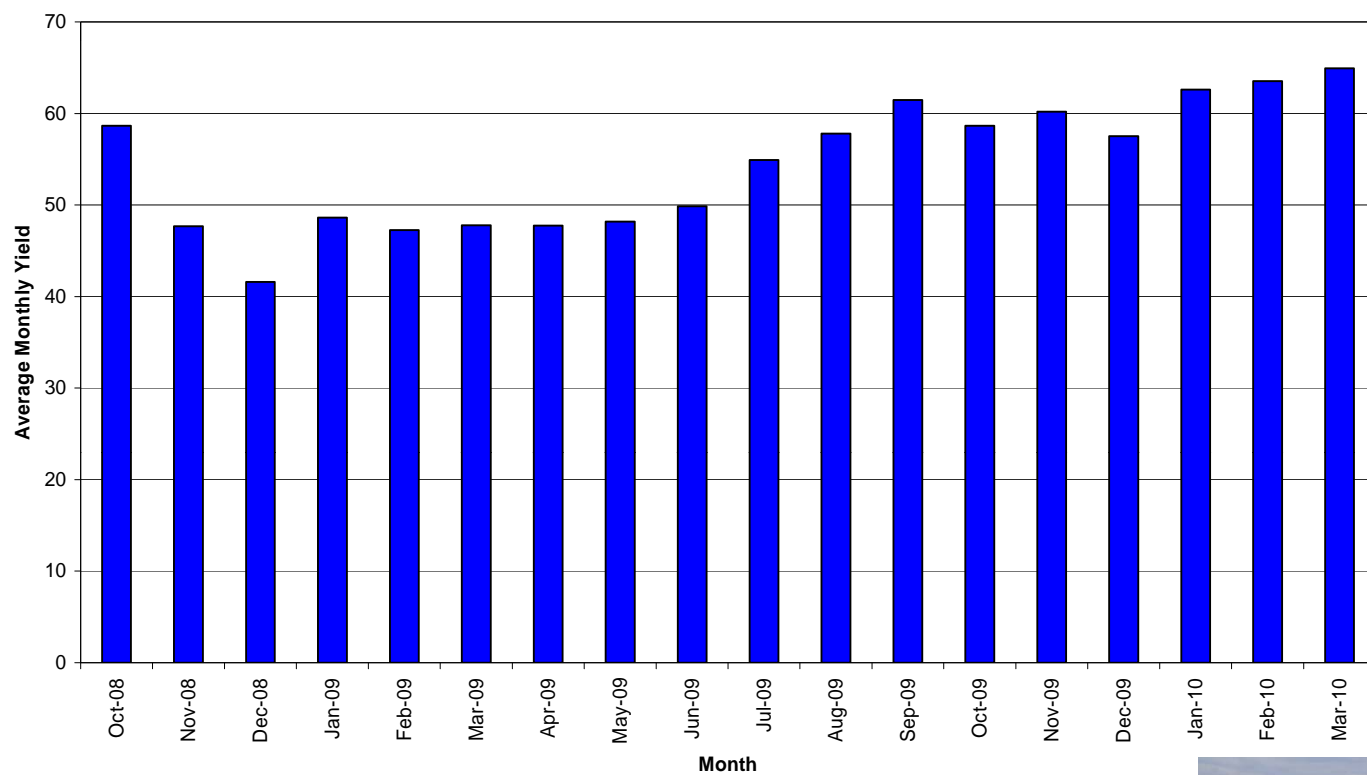
	2006	2007	2008	2009
Total Tons Handled (Including Contractors)	108,146,936	122,223,344	128,852,640	152,961,734
ROM to Crusher Production	32,252,855	32,965,188	44,282,717	52,169,049
Expit Waste	59,081,159	65,696,664	64,207,926	81,266,739
Expit Stripping Ratio	1.902	1.713	1.440	1.758
Resource (Mt)	691.5	1,316.00	1,565.30	1,362.10
Reserve (Mt)	1,053.80	1,032.50	956.9	911.5
Truck Fleet (Primary Equipment)		55	55	62
Shovel Fleet (Primary Equipment)		15	14	16

	2006	2007	2008	2009
Production				
DMS	28,691,977	29,550,673	28,394,804	28,957,233
JIG		172,928	4,746,532	10,430,445
Additional			897,270	
Total Production	28,691,977	29,723,601	34,038,606	39,387,678

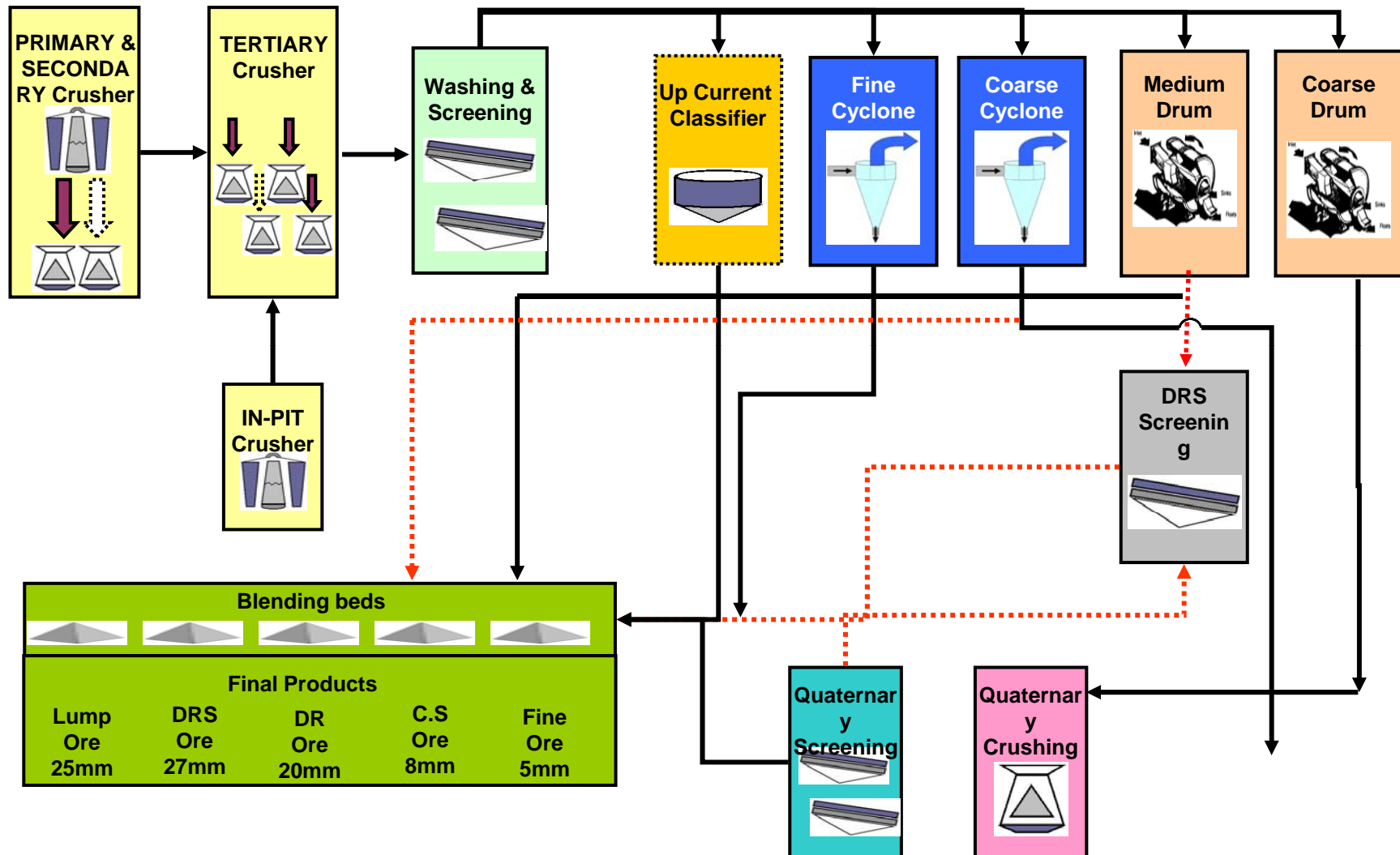
Jig Plant Flow Diagram



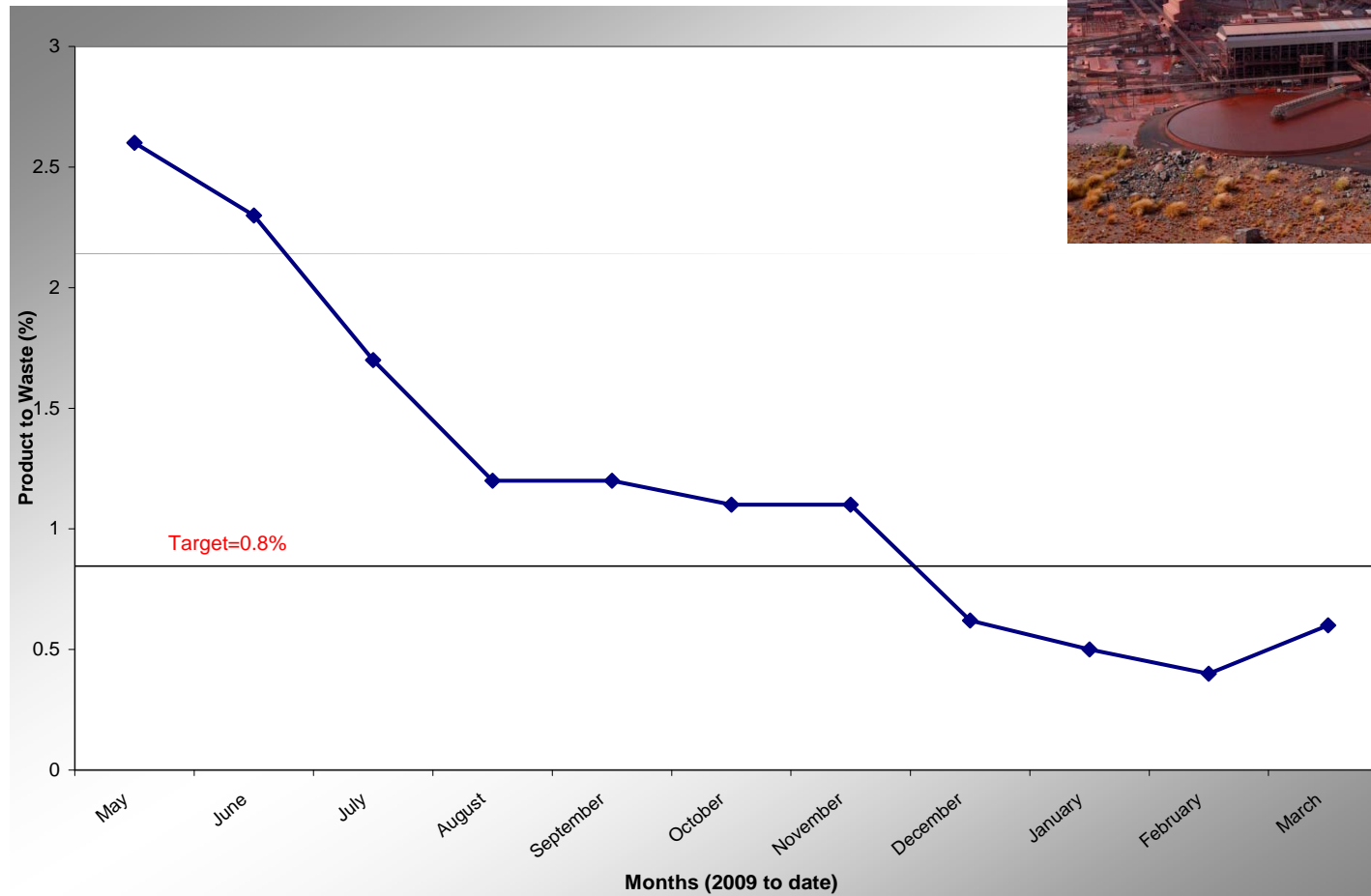
Monthly Jig Plant Yield



DMS Plant Flow Diagram



Monthly Product to waste loss(%)



Asset Optimisation

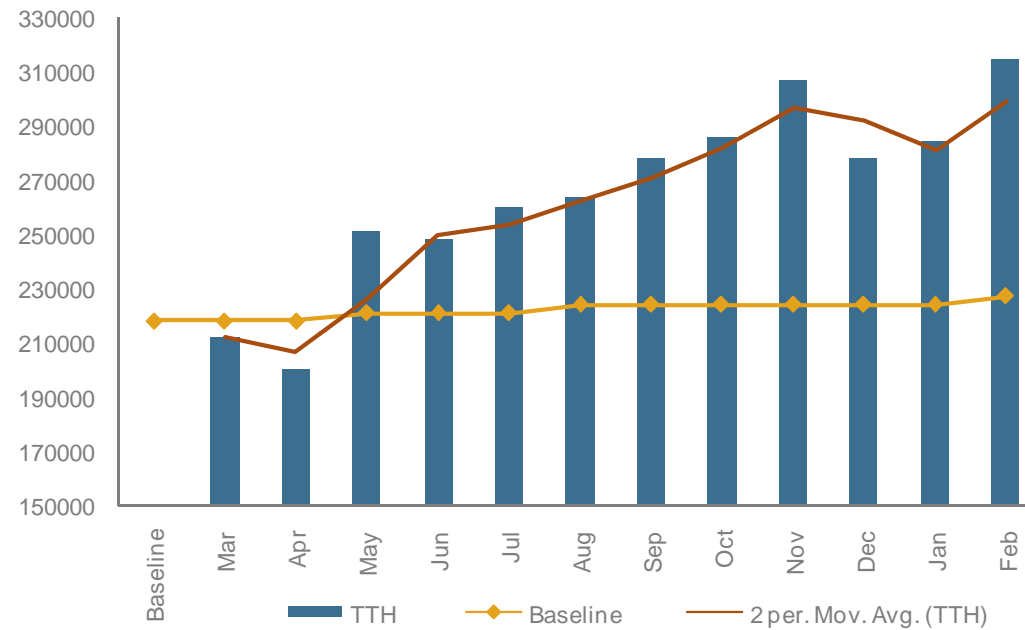
Project Bokamoso: Initial achievements



	KPIs	Baseline	February 2010 performance	% improvement vs. baseline
Trucks and Shovels	Daily tonnes handled	218kt	305kt	↑ +40
	OEE	51%	64.8%	↑ +27
	Mean time to repair (shovels)	2.39 hours	1.7 hours	↓ -29
Drilling and Blasting	Daily metres drilled	1558m	2454m	↑ +57
	OEE	39%	48.1%	↑ +23
Jig Plant	Daily ROM stacked	58kt	61kt	↑ +5

Asset Optimisation

Project Bokamoso: Initial achievements



Social and Community Development Initiatives

Education

- Whole school development
- Teacher development
- Integration of SD into HR interventions
- Rural libraries
- Early Childhood Development

Multipurpose Skills Training Centre

- Enterprise development: training, mentoring, support
- Various skills programmes
- Community access (rural)

Health

- UGM Clinic

**2010:
Priorities**

SLP

- Delivering long term sustainable value

SIOC Community Development Trust

- Alignment
- Partnerships

Small business Start-up Hubs

- Expand Sishen Hub
- New business hubs at Thabazimbi and Kolomela
- Resourcing the hubs



Summary

There are five distinguishing features of Sishen's operations and products:

At Sishen Mine we ...

- passionately care about our people, environment and the community
- have experience in mining and beneficiating iron ore
- supply on a reliable basis a product of constant quality and superior physical properties to our clients
- are used to operating in a challenging environment with year-on-year growth
- deliver on our promises